

# 1830 Owen Drive, Suite 203, Fayetteville

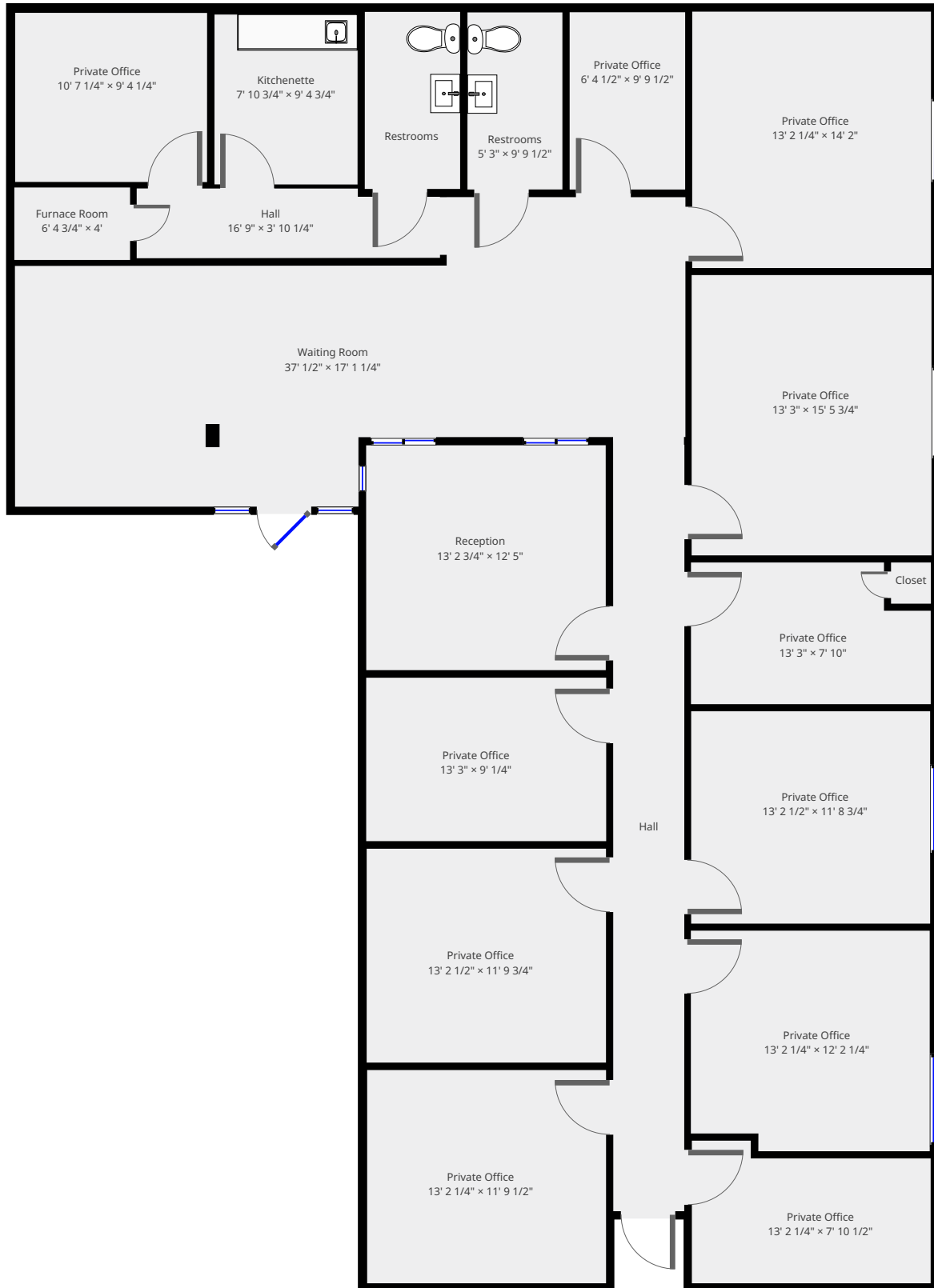
Created on  
2020-09-29

TOTAL AREA: 2814.40 sq ft • FLOORS: 1 • ROOMS: 16

	<b>Floors</b> 1	<b>Rooms</b> 16	<b>Conf. room</b> 0
--	--------------------	--------------------	------------------------

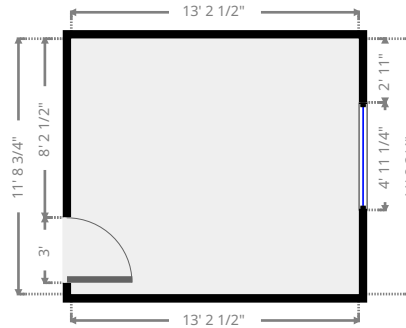
▼ Ground Floor

TOTAL AREA: 2814.40 sq ft • LIVING AREA: 2814.40 sq ft • ROOMS: 16



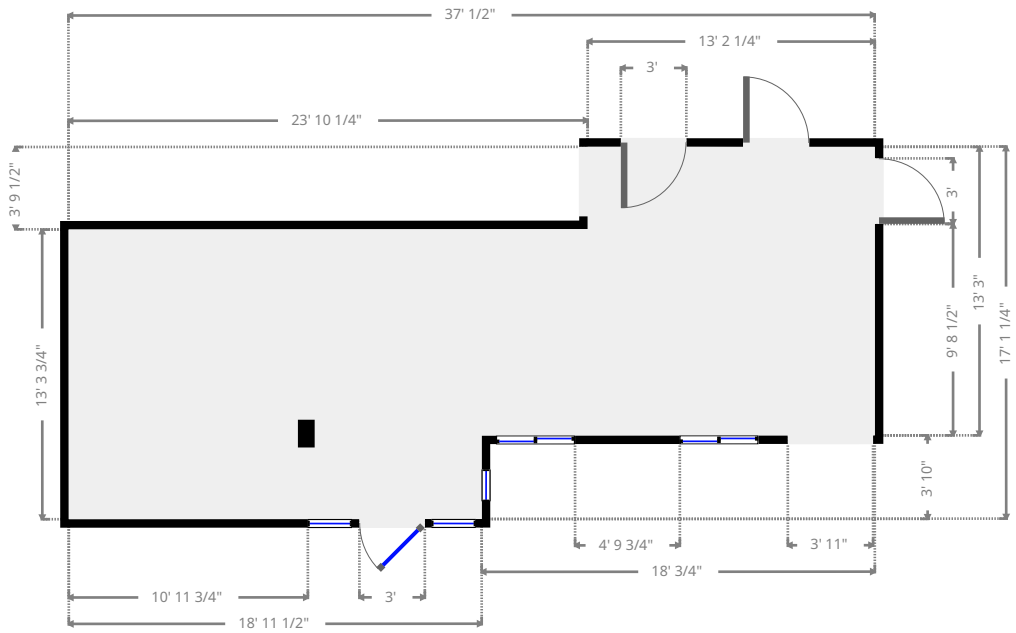
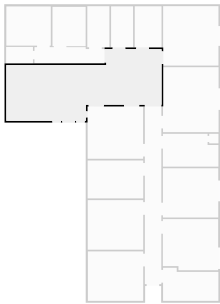
▼ **Private Office**  
Ground Floor

WIDTH: 13' 2 1/2" • LENGTH: 11' 8 3/4"  
AREA: 154.86 sq ft • PERIMETER: 49' 10 1/4"



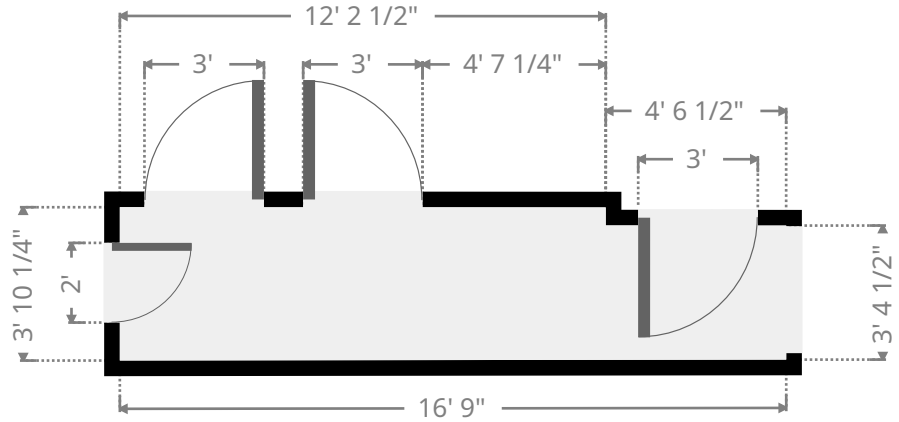
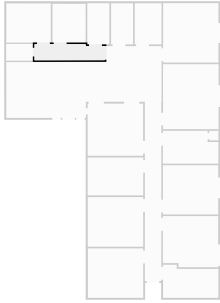
▼ **Waiting Room**  
Ground Floor

WIDTH: 37' 1/2" • LENGTH: 17' 1 1/4"  
AREA: 473.47 sq ft • PERIMETER: 108' 2 3/4"



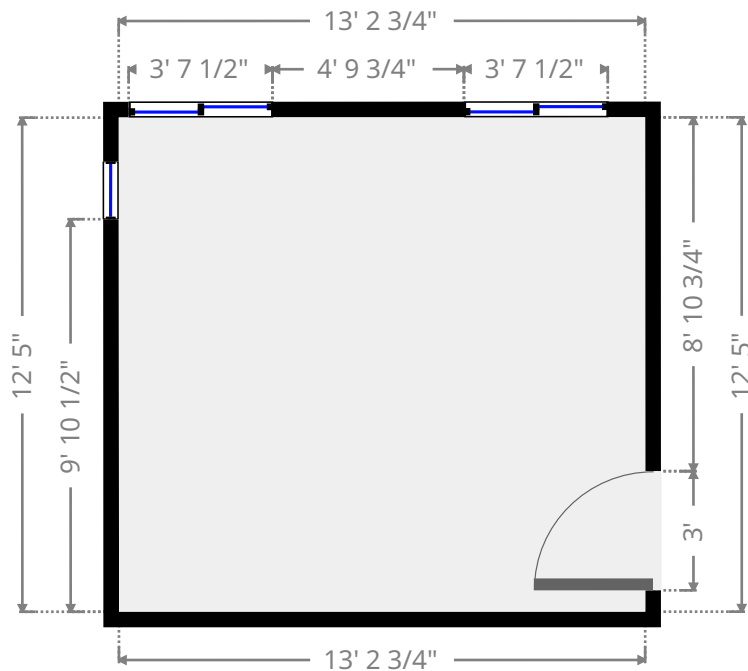
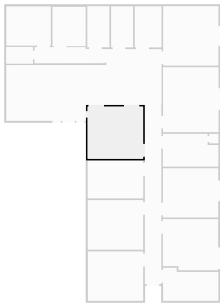
▼ **Hall**  
Ground Floor

WIDTH: 16' 9" • LENGTH: 3' 10 1/4"  
AREA: 62.24 sq ft • PERIMETER: 41' 2 1/4"



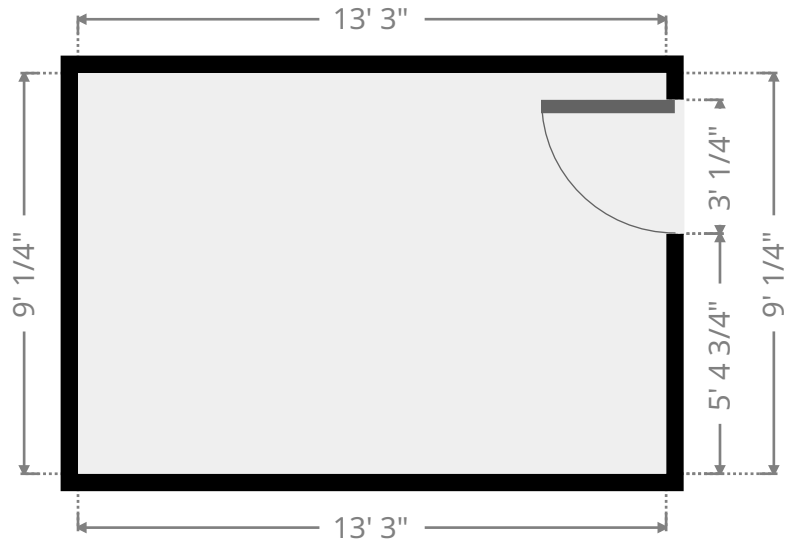
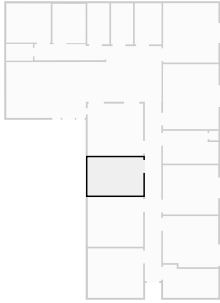
▼ **Reception**  
Ground Floor

WIDTH: 13' 2 3/4" • LENGTH: 12' 5"  
AREA: 164.36 sq ft • PERIMETER: 51' 3 3/4"



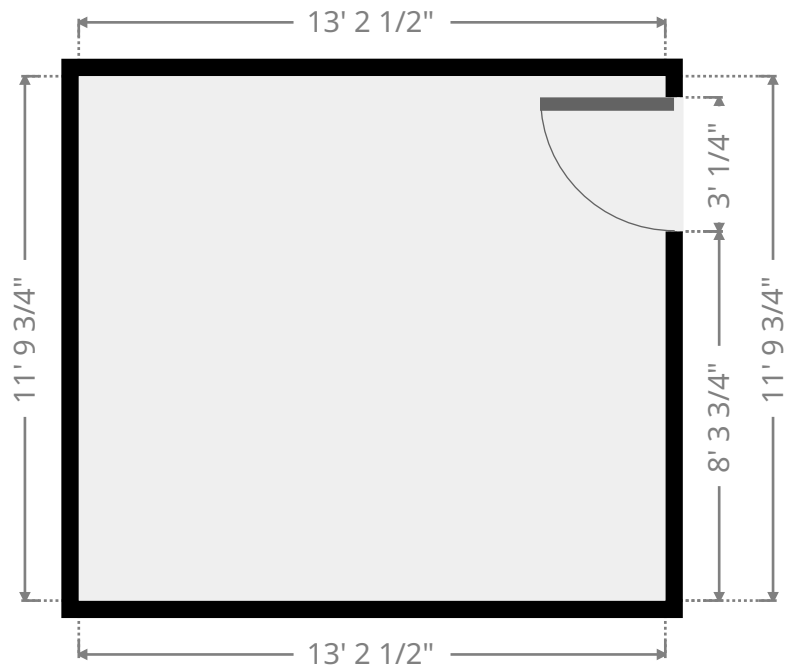
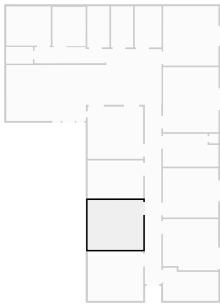
▼ **Private Office**  
Ground Floor

WIDTH: 13' 3" • LENGTH: 9' 1/4"  
AREA: 119.69 sq ft • PERIMETER: 44' 6 3/4"



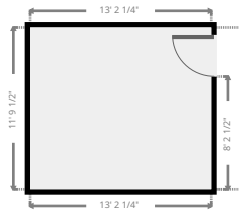
▼ **Private Office**  
Ground Floor

WIDTH: 13' 2 1/2" • LENGTH: 11' 9 3/4"  
AREA: 156.22 sq ft • PERIMETER: 50' 1"



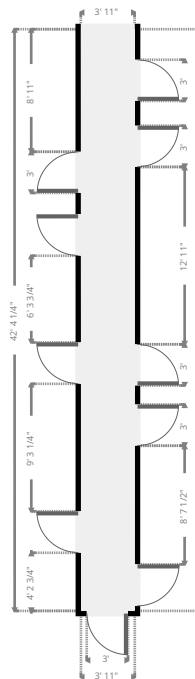
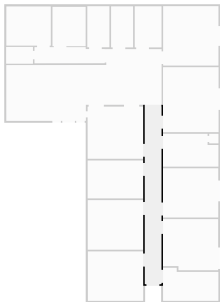
▼ **Private Office**  
Ground Floor

WIDTH: 13' 2 1/4" • LENGTH: 11' 9 1/2"  
AREA: 155.49 sq ft • PERIMETER: 49' 11 1/2"



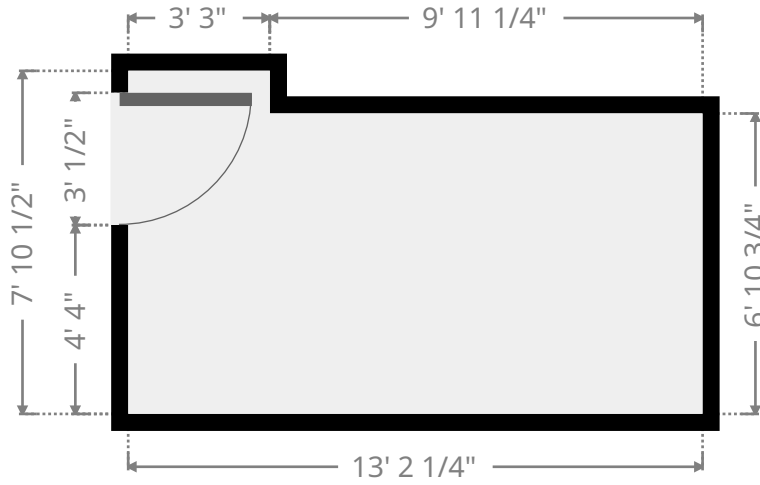
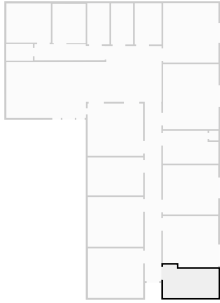
▼ **Hall**  
Ground Floor

WIDTH: 3' 11 1/4" • LENGTH: 42' 4 1/4"  
AREA: 166.36 sq ft • PERIMETER: 92' 6 3/4"



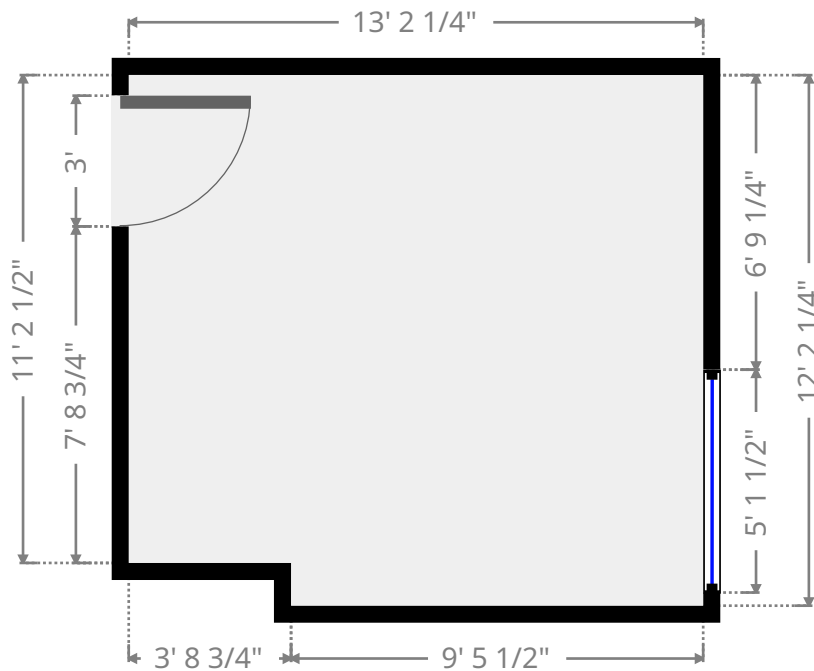
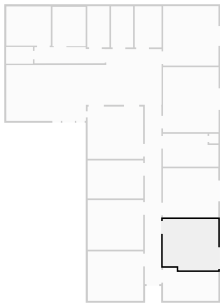
▼ **Private Office**  
Ground Floor

WIDTH: 13' 2 1/4" • LENGTH: 7' 10 1/2"  
AREA: 94.25 sq ft • PERIMETER: 42' 1 3/4"



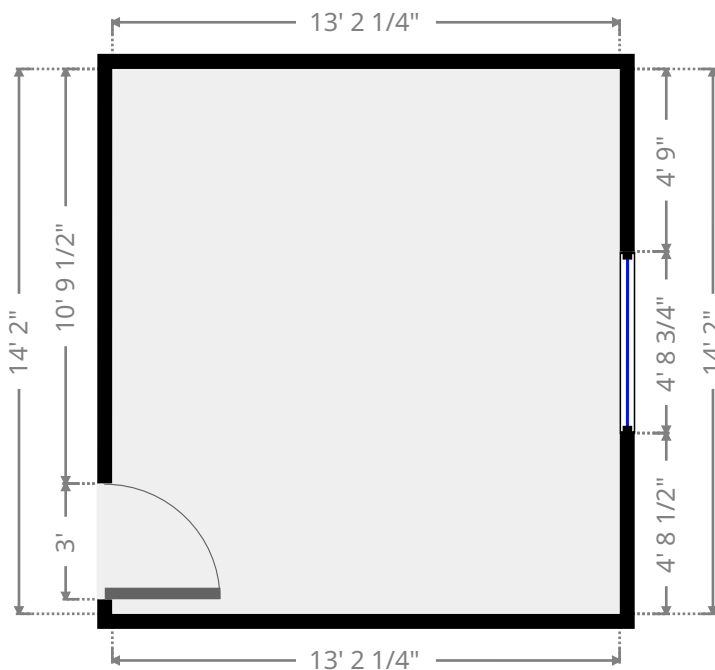
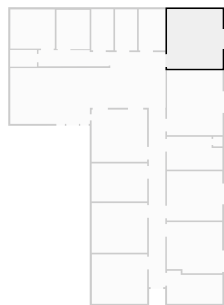
▼ **Private Office**  
Ground Floor

WIDTH: 13' 2 1/4" • LENGTH: 12' 2 1/4"  
AREA: 157.15 sq ft • PERIMETER: 50' 9 1/4"



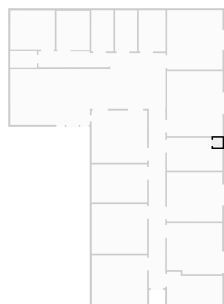
▼ **Private Office**  
Ground Floor

WIDTH: 13' 2 1/4" • LENGTH: 14' 2"  
AREA: 186.89 sq ft • PERIMETER: 54' 8 1/2"



▼ **Closet**  
Ground Floor

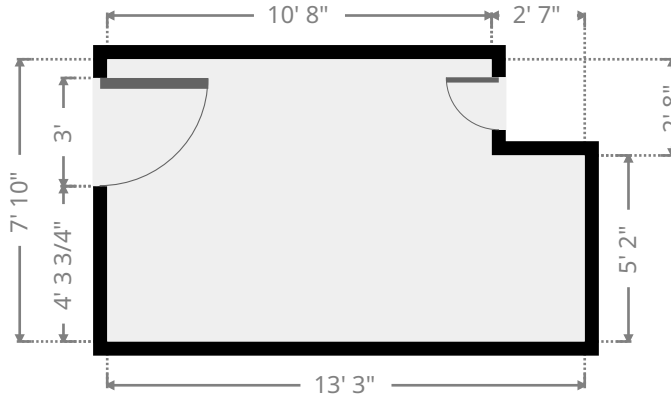
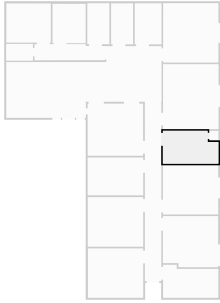
WIDTH: 2' 2 1/2" • LENGTH: 2' 3 1/4"  
AREA: 5.00 sq ft • PERIMETER: 8' 11 1/2"





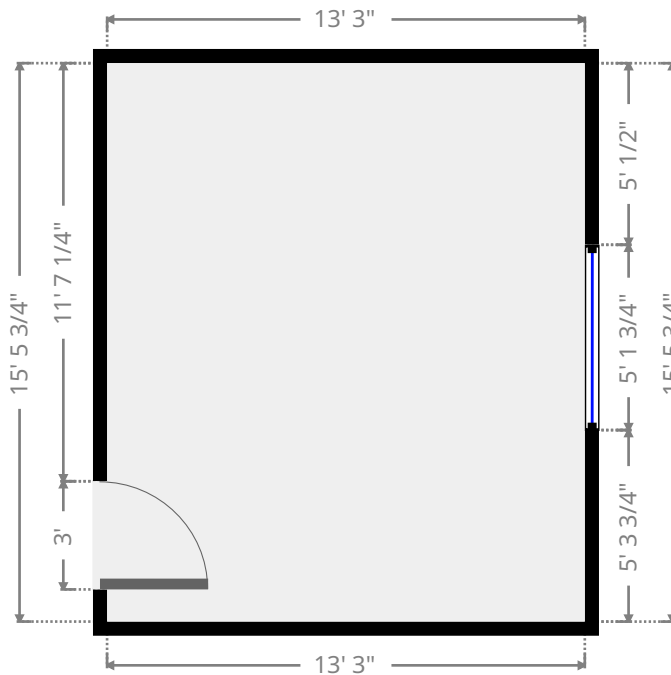
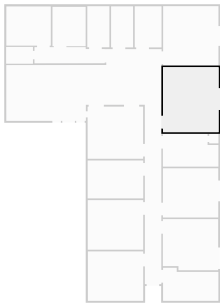
▼ **Private Office**  
Ground Floor

WIDTH: 13' 3" • LENGTH: 7' 10"  
AREA: 96.80 sq ft • PERIMETER: 42' 1 3/4"



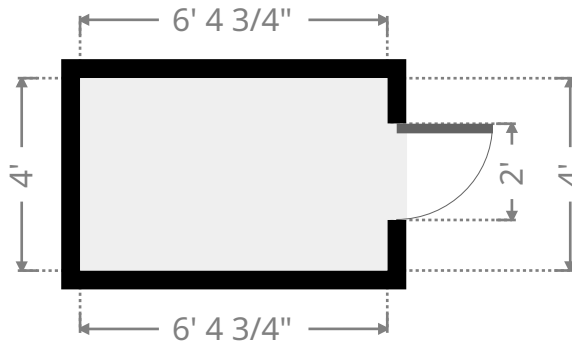
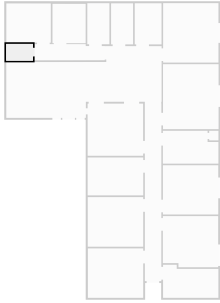
▼ **Private Office**  
Ground Floor

WIDTH: 13' 3" • LENGTH: 15' 5 3/4"  
AREA: 205.25 sq ft • PERIMETER: 57' 5 3/4"



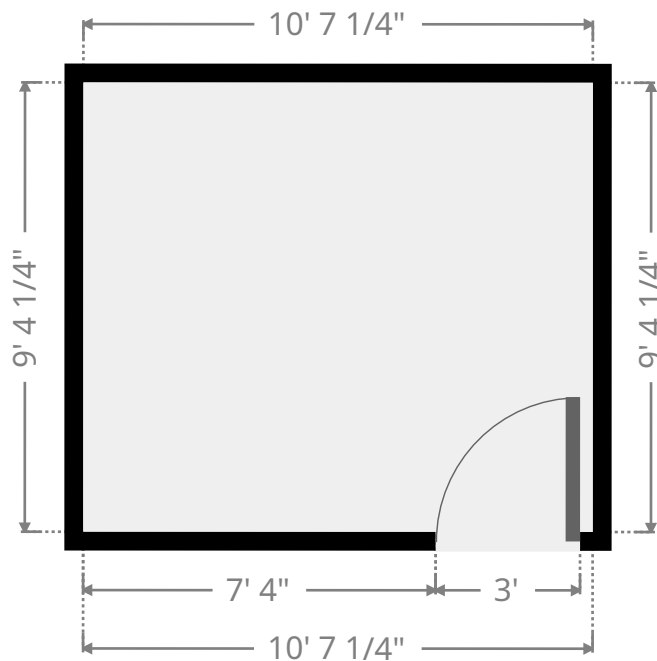
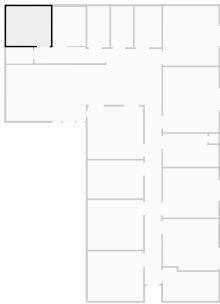
▼ **Furnace Room**  
Ground Floor

WIDTH: 6' 4 3/4" • LENGTH: 4'  
AREA: 25.58 sq ft • PERIMETER: 20' 9 1/2"



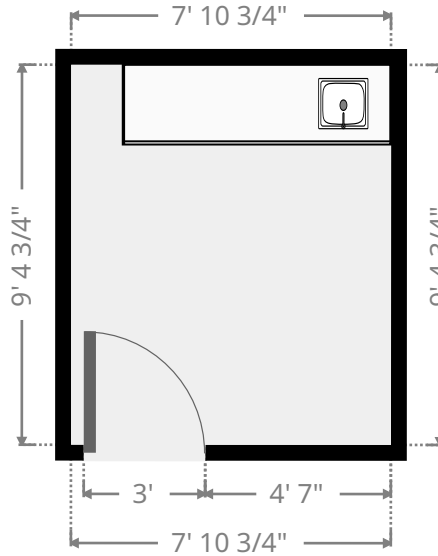
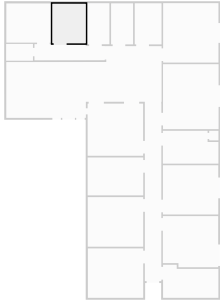
▼ **Private Office**  
Ground Floor

WIDTH: 10' 7 1/4" • LENGTH: 9' 4 1/4"  
AREA: 99.07 sq ft • PERIMETER: 39' 10 3/4"



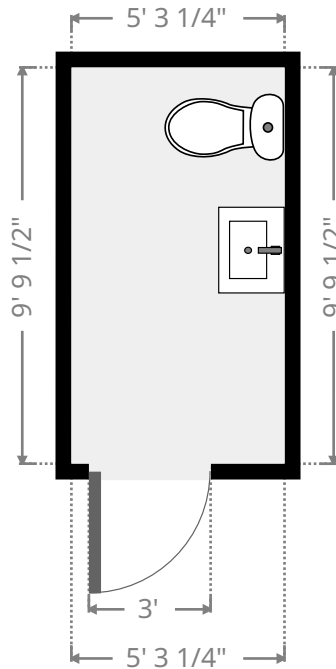
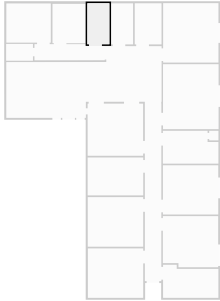
▼ **Kitchenette**  
Ground Floor

WIDTH: 7' 10 3/4" • LENGTH: 9' 4 3/4"  
AREA: 74.20 sq ft • PERIMETER: 34' 7"



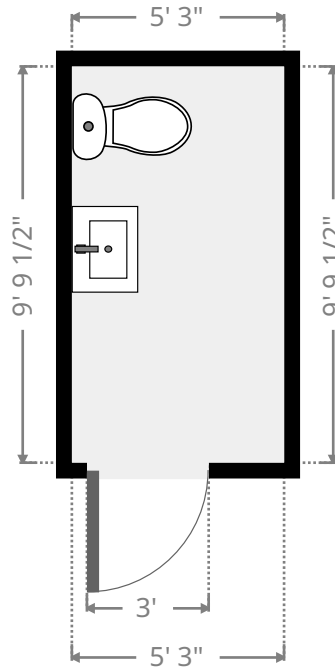
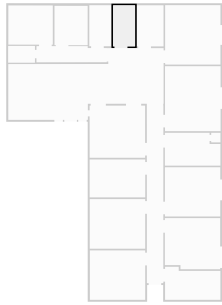
▼ **Restrooms**  
Ground Floor

WIDTH: 5' 3 1/4" • LENGTH: 9' 9 1/2"  
AREA: 51.54 sq ft • PERIMETER: 30' 1 1/4"



▼ Restrooms  
Ground Floor

WIDTH: 5' 3" • LENGTH: 9' 9 1/2"  
AREA: 51.32 sq ft • PERIMETER: 30' 3/4"



▼ Private Office  
Ground Floor

WIDTH: 6' 4 1/2" • LENGTH: 9' 9 1/2"  
AREA: 62.54 sq ft • PERIMETER: 32' 4 1/4"

